

THE LOT NUMBER IS FOUND IN THE UPPER RIGHT HAND CORNER OF THE LOT AS YOU FACE THE LOT AND IS INDICATED THUS ( ) LOCATION OF GRAVE MARKERS SHOWN THUS ( ) ARROW INDICATES DIRECTION GRAVE MARKERS WILL FACE. ALL LOTS ARE 2 GRAVE LOTS EXCEPT WHERE OTHERWISE NOTED. ALL 2 GRAVE LOTS ARE 6'x8' ALL 3 GRAVE LOTS ARE 5'x8' 1487 - 2 GRAVE LOTS 257 - 3 GRAVE LOTS 1744 - TOTAL LOTS

**ALL SAINTS CEMETERY**  
 NORTHFIELD, OHIO  
**EAST PART**  
**SECTION 4**  
 SCALE 1" = 20' G.C.A. OCT. 1982

SEC 3

LAKE

BRANDYWINE RD.

CEMETERY PROP. LINE

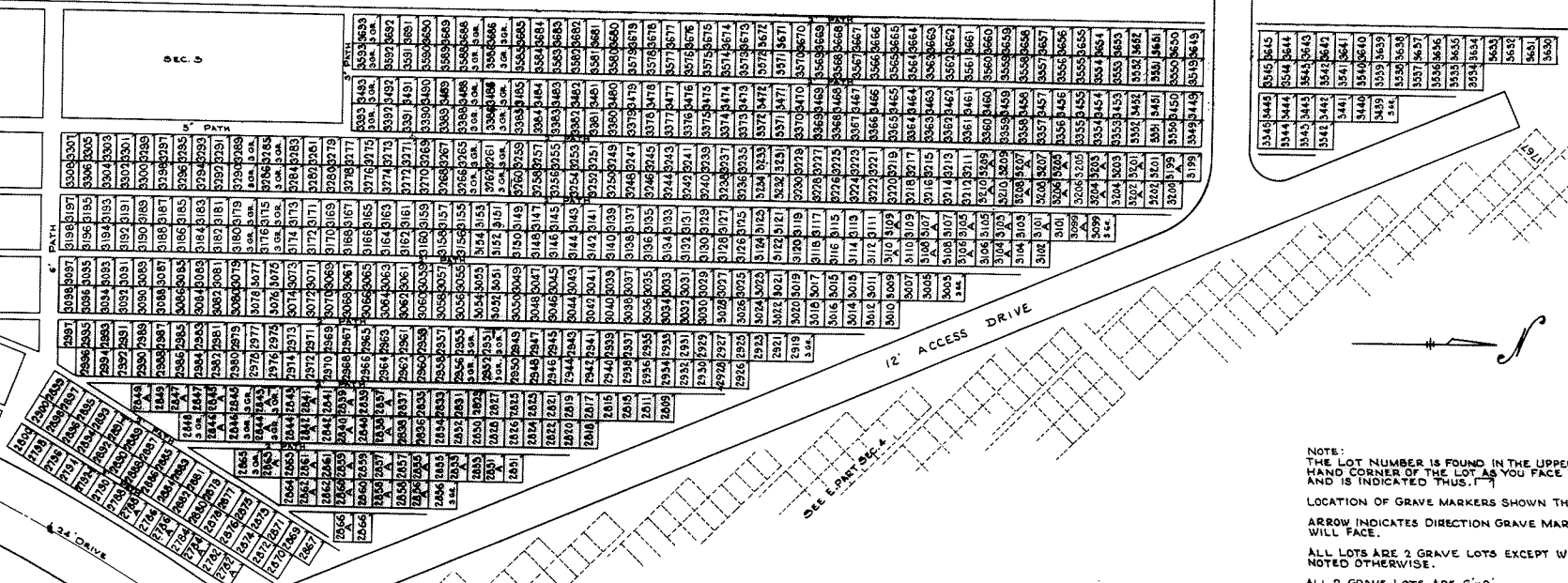
30' EASEMENT

SEC. 5

34 DRIVE

12' ACCESS DRIVE

SEE PART 3 & 4



NOTE:  
 THE LOT NUMBER IS FOUND IN THE UPPER RIGHT  
 HAND CORNER OF THE LOT AS YOU FACE THE LOT  
 AND IS INDICATED THUS: (1)

LOCATION OF GRAVE MARKERS SHOWN THUS T  
 ARROW INDICATES DIRECTION GRAVE MARKERS  
 WILL FACE.

ALL LOTS ARE 2 GRAVE LOTS EXCEPT WHERE  
 NOTED OTHERWISE.

ALL 2 GRAVE LOTS ARE 6'x9'  
 ALL 3 GRAVE LOTS ARE 8'x8'

LOT SUMMARY -  
 695 2 GRAVE LOTS  
 25 3 GRAVE LOTS  
 720 TOTAL LOTS

REV. 8-20-75  
 REV. 4-1-73  
 REV. 7-8-64

**ALL SAINTS CEMETERY**  
 NORTHFIELD, OHIO  
**WEST PART**  
**SECTION 4**  
 SCALE 1"=20' G.C.A. OCT. 1962